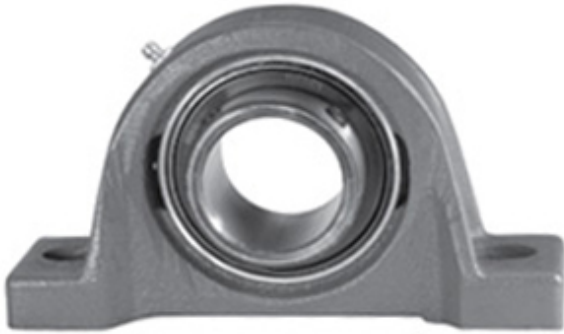




NTA BEARING PRECISION AXLE CORP.

0.938 Inch | 23.825 Millimeter x 1.172 Inch |
 29.77 Millimeter x 1.313 Inch | 33.35 Millimeter
 LINK BELT PL3S215E Pillow Block Bearings



PL3S215E Bearing 2D drawings and 3D CAD models

Bearing No. PL3S215E

| | |
|---------------------------|---|
| Category | Pillow Block Bearings |
| Inventory | 0.0 |
| Manufacturer Name | REXNORD |
| Minimum Buy Quantity | N/A |
| Weight | 0.82 |
| EAN | 0662327421304 |
| Product Group | M06110 |
| Number of Mounting Holes | 2 |
| Mounting Method | Set Screw |
| Housing Style | 2 Bolt Pillow Block |
| Rolling Element | Ball Bearing |
| Housing Material | Cast Iron |
| Expansion / Non-expansion | Non-expansion |
| Mounting Bolts | 3/8 Inch |
| Relubricatable | Yes |
| Insert Part Number | SG215EL |
| Seals | Single Lip Contact |
| Housing Configuration | 1 Piece Solid |
| Inch - Metric | Inch |
| Other Features | Single Row Intermediate Duty Low Base Extended Inner Race |
| Long Description | 2 Bolt Pillow Block; 15/16" Bore; 1-5/16" Base to Center Height; Set Screw Mount; Ball Bearing; Relubricatable; |



NTA BEARING PRECISION AXLE CORP.

| | |
|-------------------------------|---|
| | Cast Iron; Single Lip Contact; Non-expansion |
| Category | Pillow Block |
| UNSPSC | 31171511 |
| Harmonized Tariff Code | 8483.20.40.40 |
| Noun | Bearing |
| Keyword String | Pillow Block |
| Manufacturer URL | http://www.rexnord.com |
| Manufacturer Item Number | PL3S215E |
| Manufacturer Internal Number | 5842130 |
| Weight / LBS | 1.8 |
| D | 1.172 Inch 29.77 Millimeter |
| Bolt Spacing Minimum | 0 Inch 0Millimeter |
| B | 1.313 Inch 33.35 Millimeter |
| Actual Bolt Center to Center | 4.1 Inch 105Millimeter |
| d | 0.938 Inch 23.825 Millimeter |
| Nominal Bolt Center to Center | 4.1 Inch 105 Millimeter |
| Bolt Spacing Maximum | 0 Inch 0Millimeter |