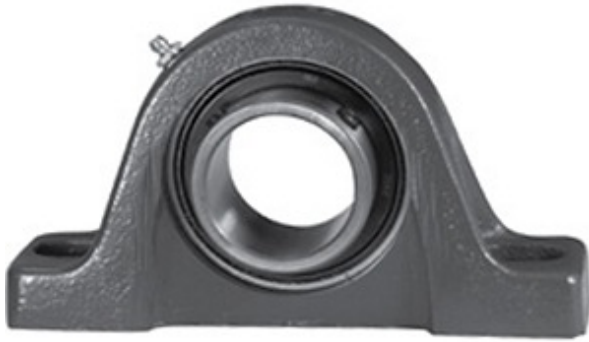




NTA BEARING PRECISION AXLE CORP.

1.125 Inch | 28.575 Millimeter x 1.344 Inch |
 34.138 Millimeter x 1.563 Inch | 39.7 Millimeter
 LINK BELT PL3S218E Pillow Block Bearings



Bearing No. PL3S218E

PL3S218E Bearing 2D drawings and 3D CAD models

Category	Pillow Block Bearings
Inventory	0.0
Manufacturer Name	REXNORD
Minimum Buy Quantity	N/A
Weight	1.243
EAN	0662327421342
Product Group	M06110
Number of Mounting Holes	2
Mounting Method	Set Screw
Housing Style	2 Bolt Pillow Block
Rolling Element	Ball Bearing
Housing Material	Cast Iron
Expansion / Non-expansion	Non-expansion
Mounting Bolts	1/2 Inch
Relubricatable	Yes
Insert Part Number	MB251-18-PA
Seals	Single Lip
Housing Configuration	1 Piece Solid
Inch - Metric	Inch
Other Features	Single Row Standard Duty Has Flinger
Long Description	2 Bolt Pillow Block; 1-1/8" Bore; 1-9/16" Base to Center Height; Set Screw Mount; Ball Bearing; 4-1/8" Minimum Bolt Spacing;



NTA BEARING PRECISION AXLE CORP.

	5-1/8" Bolt Spacing Maximum; Relubricatable; Cast Iron;
Category	Pillow Block
UNSPSC	31171511
Harmonized Tariff Code	8483.20.40.40
Noun	Bearing
Keyword String	Pillow Block
Manufacturer URL	http://www.rexnord.com
Manufacturer Item Number	CL251-18
Manufacturer Internal Number	5804325
Weight / LBS	2.27
d	1.125 Inch 28.575 Millimeter
Bolt Spacing Minimum	4.125 Inch 104.775Millimeter
B	1.563 Inch 39.7 Millimeter
D	1.344 Inch 34.138 Millimeter
Bolt Spacing Maximum	5.125 Inch 130.175Millimeter
Nominal Bolt Center to Center	4.6 Inch 116.8 Millimeter