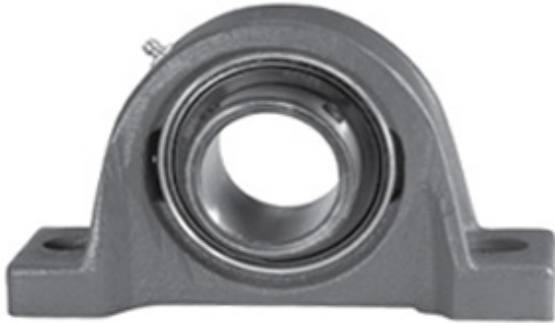




NTA BEARING PRECISION AXLE CORP.

1.75 Inch | 44.45 Millimeter x 2.031 Inch | 51.59
Millimeter x 2.375 Inch | 60.325 Millimeter LINK
BELT PH3U228N Pillow Block Bearings



Bearing No. PH3U228N

PH3U228N Bearing 2D drawings and 3D CAD models

Category	Pillow Block Bearings
Inventory	0.0
Manufacturer Name	REXNORD
Minimum Buy Quantity	N/A
Weight	3.062
EAN	0662327113964
Product Group	M06110
Number of Mounting Holes	2
Mounting Method	Set Screw
Housing Style	2 Bolt Pillow Block
Rolling Element	Ball Bearing
Housing Material	Cast Iron
Expansion / Non-expansion	Non-expansion
Mounting Bolts	5/8 Inch
Relubricatable	Yes
Insert Part Number	UG228NL
Seals	Single Lip Contact
Housing Configuration	1 Piece Solid
Inch - Metric	Inch
Other Features	Single Row Standard Duty High Base Wide Inner Race
Long Description	2 Bolt Pillow Block; 1-3/4" Bore; 2-3/8" Base to Center Height; Set Screw Mount; Ball Bearing; Relubricatable;



NTA BEARING PRECISION AXLE CORP.

	Cast Iron; Single Lip Contact; Non-expansion
Category	Pillow Block
UNSPSC	31171511
Harmonized Tariff Code	8483.20.40.40
Noun	Bearing
Keyword String	Pillow Block
Manufacturer URL	http://www.rexnord.com
Manufacturer Item Number	PH3U228N
Manufacturer Internal Number	5811396
Weight / LBS	7.9
B	2.375 Inch 60.325 Millimeter
Bolt Spacing Minimum	0 Inch 0Millimeter
Bolt Spacing Maximum	0 Inch 0Millimeter
d	1.75 Inch 44.45 Millimeter
D	2.031 Inch 51.59 Millimeter
Nominal Bolt Center to Center	6.5 Inch 165 Millimeter
Actual Bolt Center to Center	6.6 Inch 167.6Millimeter