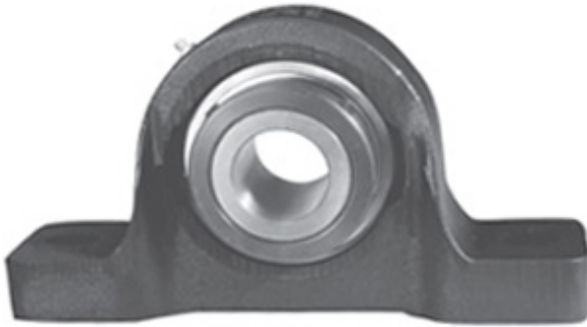




## NTA BEARING PRECISION AXLE CORP.

0.75 Inch | 19.05 Millimeter x 1.469 Inch | 37.3  
Millimeter x 1.625 Inch | 41.275 Millimeter LINK  
BELT PU312 Pillow Block Bearings



PU312 Bearing 2D drawings and 3D CAD models

Bearing No. PU312

Category	Pillow Block Bearings
Inventory	0.0
Manufacturer Name	REXNORD
Minimum Buy Quantity	N/A
Weight	1.36
EAN	0662327962777
Product Group	M06110
Number of Mounting Holes	2
Mounting Method	Concentric Collar
Housing Style	2 Bolt Pillow Block
Rolling Element	Ball Bearing
Housing Material	Cast Iron
Expansion / Non-expansion	Non-expansion
Mounting Bolts	1/2 Inch
Relubricatable	Yes
Insert Part Number	UG312L
Seals	Steel Clad Clearance
Housing Configuration	1 Piece Solid
Inch - Metric	Inch
Other Features	Single Row   Heavy Duty   Single Collar   Standard Backing   With Set Screw
Long Description	2 Bolt Pillow Block; 3/4" Bore; 1-5/8" Base to Center Height; Concentric Collar Mount; Ball Bearing;



## NTA BEARING PRECISION AXLE CORP.

	Relubricatable; Cast Iron; Steel Clad Clearance; Non- expansion
Category	Pillow Block
UNSPSC	31171511
Harmonized Tariff Code	8483.20.40.40
Noun	Bearing
Keyword String	Pillow Block
Manufacturer URL	<a href="http://www.rexnord.com">http://www.rexnord.com</a>
Manufacturer Item Number	PU312
Manufacturer Internal Number	5896277
Weight / LBS	3
d	0.75 Inch   19.05 Millimeter
Bolt Spacing Maximum	0 Inch   0Millimeter
Bolt Spacing Minimum	0 Inch   0Millimeter
D	1.469 Inch   37.3 Millimeter
Nominal Bolt Center to Center	5 Inch   127 Millimeter
Actual Bolt Center to Center	5 Inch   127Millimeter
B	1.625 Inch   41.275 Millimeter